



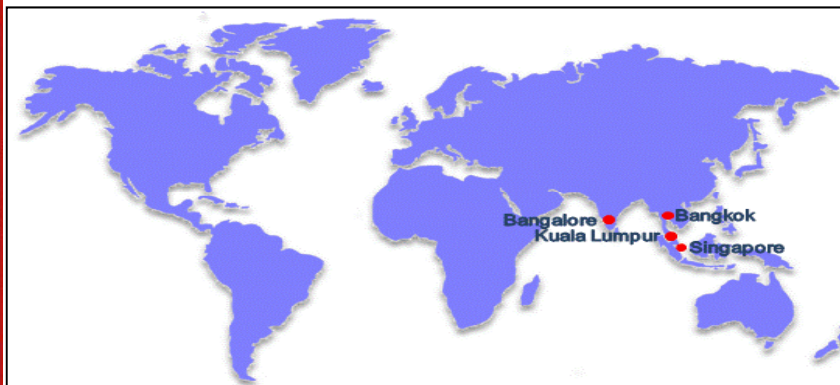
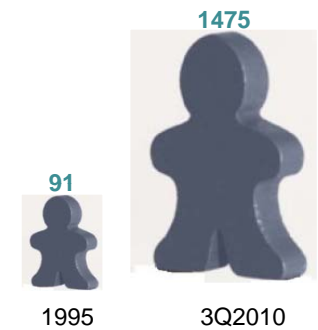
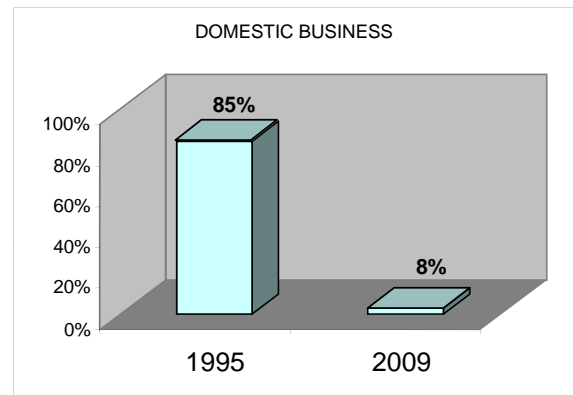
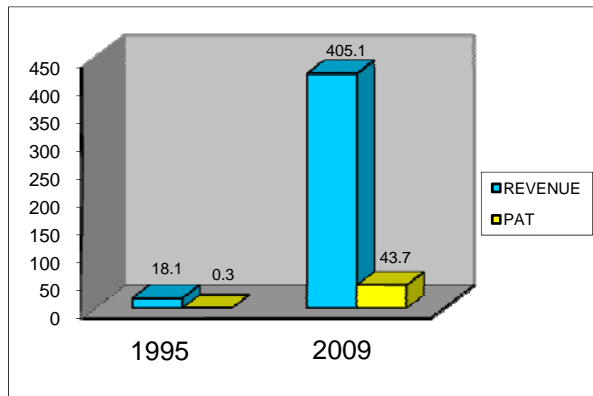
PULSE OF ASIA
11 JANUARY 2011
DBS VICKERS SECURITIES

Milestones

- 1985 Commenced operations
- 1993-1995 Established presence in Thailand, Malaysia & India
- 1997 Management Buy-In
- 1999 Initial Public Offering
- 2000 Acquired W-Industries (US) and Servelec (UK)
- 2003 Acquired Transtel (Singapore) and established presence in Carmen, Doha, Dubai, Tehran, Soku, Muscat, Shanghai, Beijing and Jakarta. Acquired ttc in Slovakia as part of UK operations
- 2004 Acquired Uniserve (Australia) & RTUnet (Australia; product)
- 2006 Acquired Techno Trade (Belgium; product) & Scomag (Scotland)
- 2008 Acquired W.Arthur Fisher (NZ) & Hankin Acquisition Corp (US)
- 2010 Acquired System Integration & Automation Ltd (UK)
- 2011 To acquire ASTIB, Perth Australia, Telecoms

from NOTHING to SOMETHING

A TRULY GLOBAL TECHNOLOGIES COMPANY HEADQUARTERED IN SINGAPORE

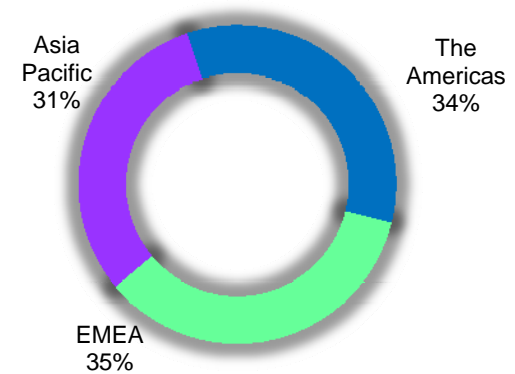


CSE *global*

Geographical Distribution

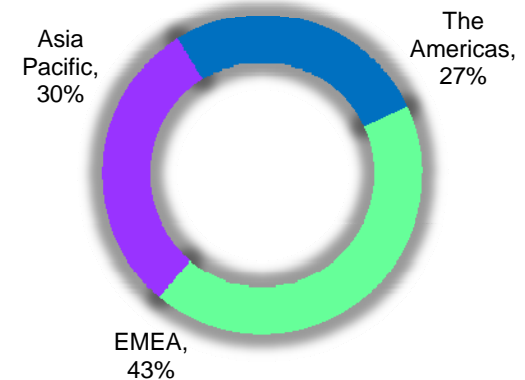
Revenue

- Asia Pacific 31%
- The Americas 34%
- EMEA* 35%



PAT

- Asia Pacific 30%
- The Americas 27%
- EMEA* 43%

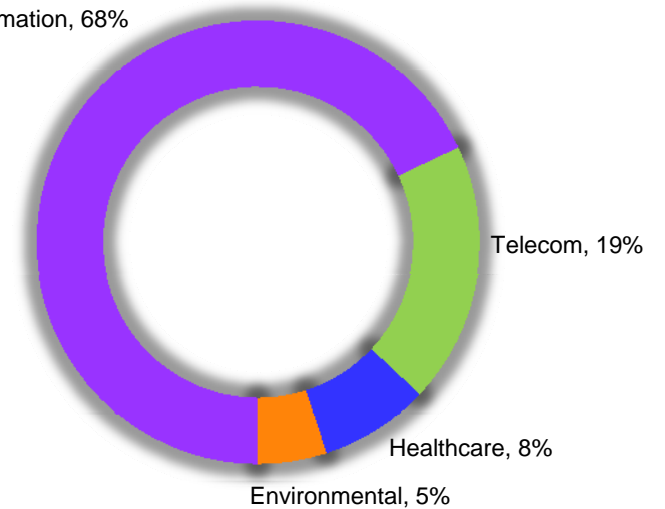


*EMEA – Europe, Middle East & Africa

Core Business Segments

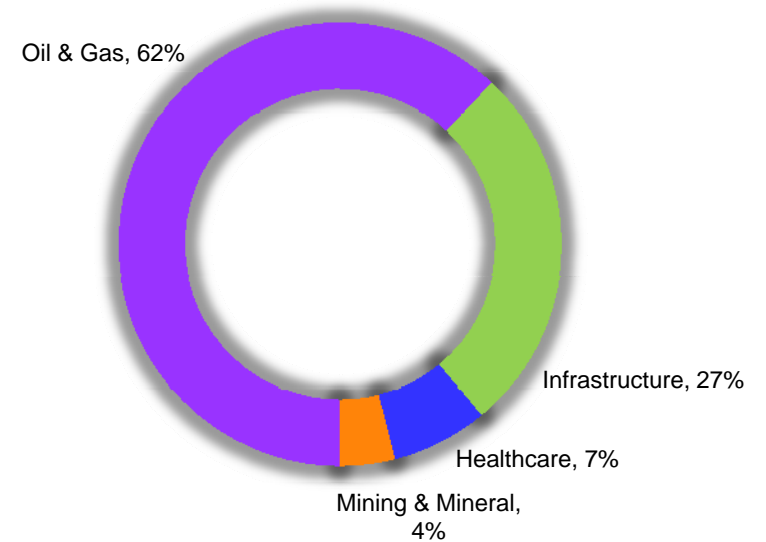
- Automation 68%
- Telecommunication & Security 19%
- Healthcare 8%
- Environmental 5%

Automation, 68%



Turnover By Industry Segments

❑	Oil & Gas*	62%
❑	Infrastructure**	27%
❑	Healthcare	7%
❑	Mining & Mineral	4%



Notes :

*Oil & Gas : upstream 65%, midstream 5% and downstream 30%

**Infrastructure : power, water, environmental and transportation

***Greenfield (new) & Brownfield (old) projects are about 55% & 45% respectively

Automation Solutions

Process Control System

Hybrid or PLC-based system which monitors and controls the facility and auxiliary processing equipment. The system includes visualisation of human machine interface (HMI), third-party control system interface and database management.

Safety Shutdown System

PLC-based or proprietary hardware based safety systems which monitor and control the critical aspects of the production facility including the monitoring of combustible gas, toxic gas, smoke & fire. The (SIL)* system will initiate orderly process shutdown in the event of serious process upset.

**Safety Integrity Level*

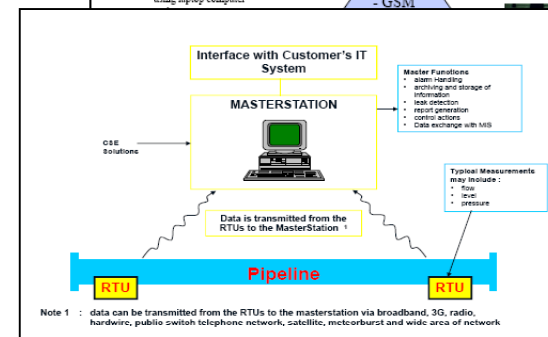
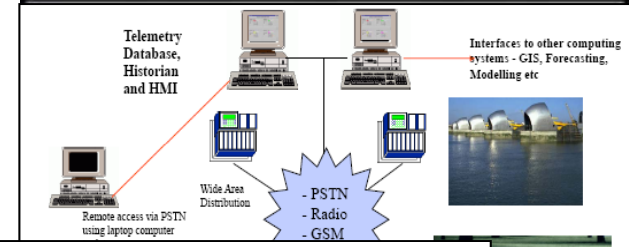


Automation Solutions

SCADA/Telemetry/Pipeline Control System

SCADA, which stands for Supervisory Control & Data Acquisition, refers to an industrial control computer system that monitors and controls an industrial infrastructure or facility, from a central location via remotely connected field PLCs or RTUs. The system also integrates the real time database with business system to provide totally managed asset based solutions and automated predictive based decisions.

SCADA includes pipeline control system to maintain application of correct pressure along the pipeline for the smooth flow of the fluid via the pumping station control.



Automation Solutions

Subsea Control System

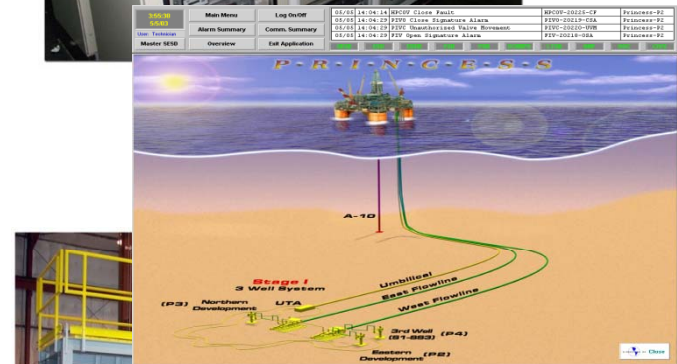
The Master Control System (MCS) is a PLC-based control system, which is installed on production facility, to monitor and control subsea wellheads. System includes visualization, data management, and interface to facility topsides control system.

Wellhead Control System

The system, hydraulic and/or pneumatic, is to control dry wellhead valves and flowlines, in single or multi-headed wellhead systems. The wellhead control panel logic is often interfaced to and/or controlled by the facility safety system.

Process Skid System

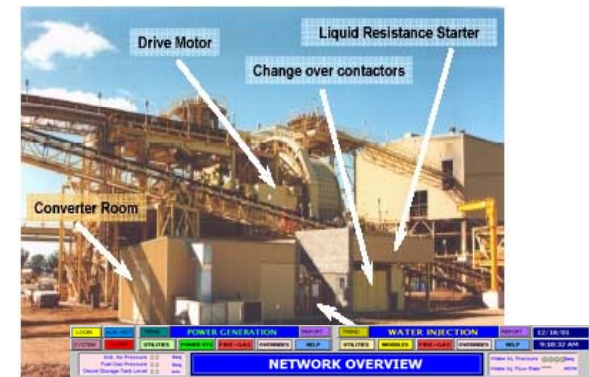
The chemical injection system, which consists of the skid assembly housing pumps, reservoirs, measurement and control devices and distribution circuitry, is to disperse a wide array of treatment chemicals into the production flow lines. Chemical injection is most often applied to subsea wellheads on offshore facilities.



Automation Solutions

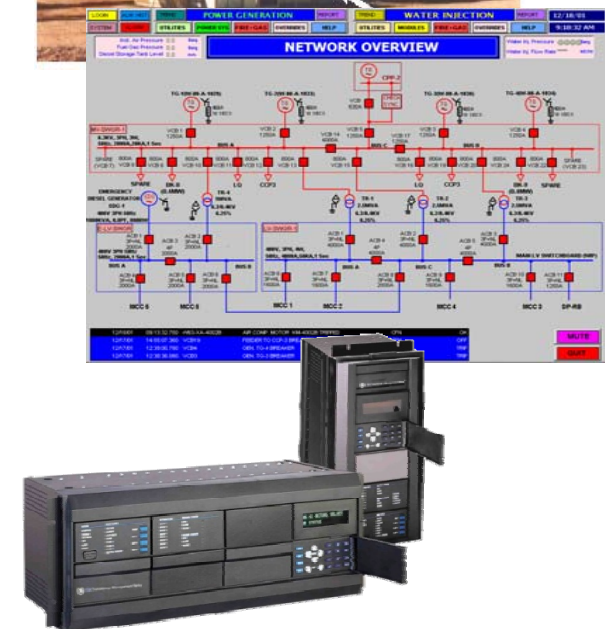
Electrical Drive and High/Medium Voltage System

The power conversion business incorporates various electrical control equipment including low/medium voltage variable speed drives and solid state soft starters, slip energy recovery drive and liquid resistance starters, all centered around the starting, running and electronic speed control of low, medium and high electric motors.



Electrical Protection and Control System

The protection system mainly deploys the GE Multilin range of products which cover motor protection, feeder protection, line protection, transformer protection and generator protection. The offerings include industrial network & network security design, and implementation to protect real-time process control and SCADA systems of critical infrastructure systems.

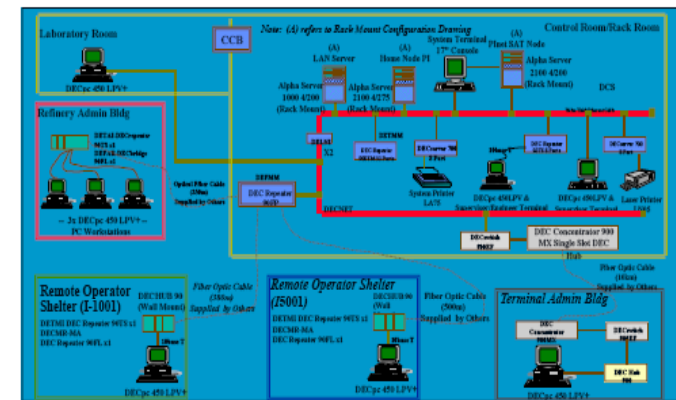
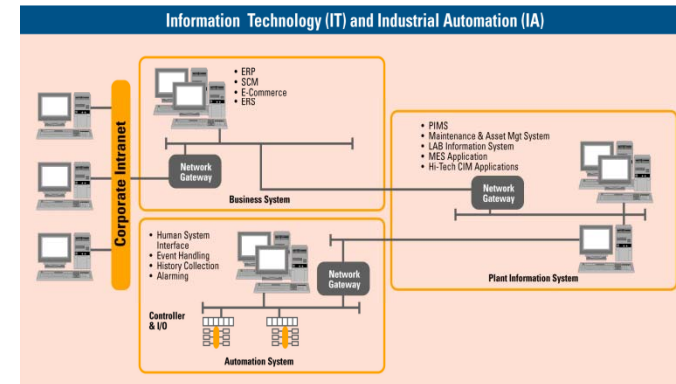


CSE global

Automation Solutions

Plant Information Management System (PIMS)

PIMS is the heart of an enterprise-wide real time information infrastructure that transforms real-time data into operation intelligence, and integrates production information with the enterprise business system. The system captures raw data from any control systems and, through a suite of user configurable reporting, analysis and web software tools, displays current and past operating conditions on the desktops for the enterprise. The information is also stored online at its original resolution for subsequent analysis.



Automation Solutions

Road Traffic Management & Control System

TMC is an application of advanced technologies like electronics, communication, control and information technology for the benefit of more effective road transportation. CSE has built up and established its competency and capability to provide intelligent transportation solutions such as:

- Electronic Road Pricing System
- Urban Traffic Control System
- Electronic Toll Collection System
- Motorway and Tunnel Management System
- Communication Backbone System
- Electronic Information Display System
- Over-height Vehicle Detection System



Telecommunication & Security Surveillance Solutions

Services provided include:

Satellite Communications Systems (VSAT) Fibre Optic Communication System Wireless Solutions

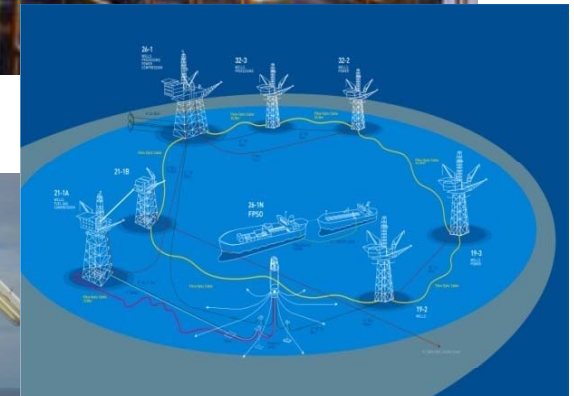
- Microwave
- Microwave radio system
- Point-to-point and point-to-multipoint microwave radio system
- Spread Spectrum radio system

Radio systems

- SSB
- UHF/VHF digital radio system
- Trunked radio system

Other Systems

- CCTV surveillance system
- PABX telephone system
- Public address & intercom system
- Environmental monitoring system



CSE global

Healthcare Solutions

Electronic Patient Care Record System

The RiO software package covers Mental Health, Community Health and Child Health with the different care settings being accommodated via the configuration of the system. RiO is a clinically rich package designed to be used by clinicians for themselves and for the benefit of their patients. Other key functions include:

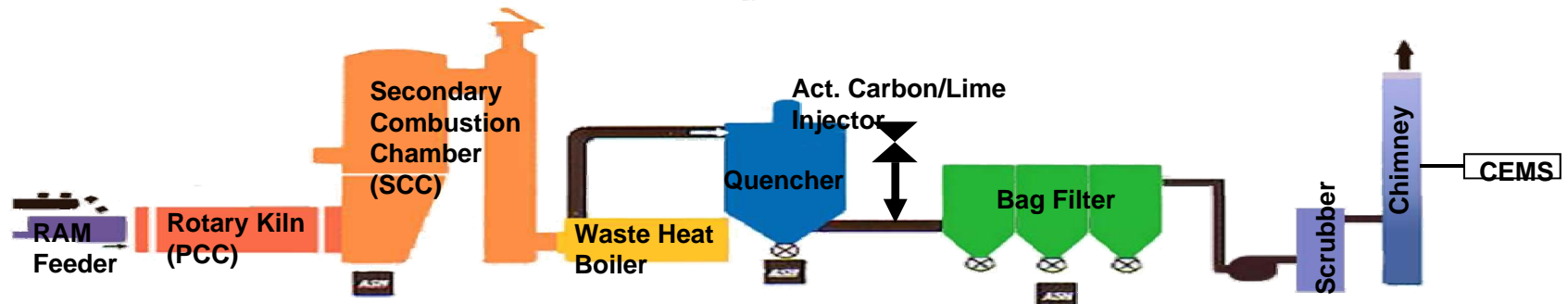
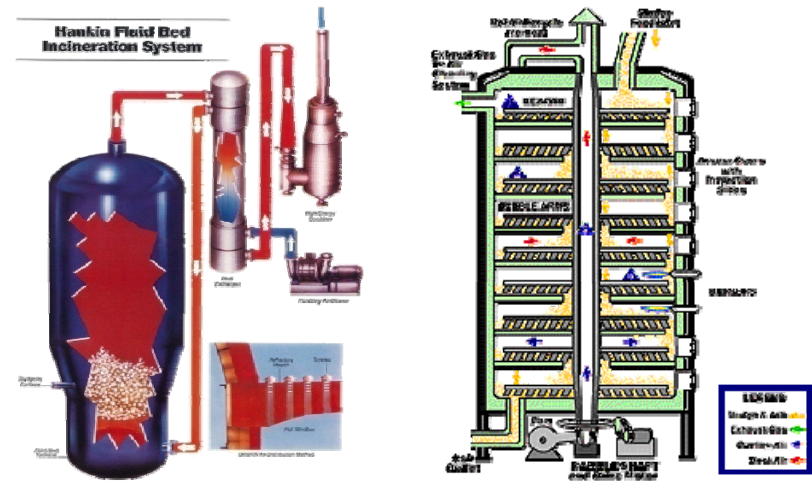
- Case notes
- Assessments
- Care plans
- Mental Health Act administration
- Appointment scheduling
- Clinic management
- In-patient management
- Reporting
- Care setting functionality



Environmental Solutions

Specialised Furnace System

The design, engineering and supply of industrial furnace systems for industrial incineration plants, industrial process plants and municipal sludge incinerators, to a wide range of clients. Product lines include multiple hearth, fluid bed, shaft kiln and rotary furnace systems.



Historical Performance

S\$M

	<u>2005</u>	<u>2006</u>	<u>2007</u>	<u>2008</u>	<u>2009</u>	<u>9M2010</u>
Revenue	267.3	334.5	404.7	441.5	405.1	320.1
GM (%)	32.7	32.8	36.5	37.4	38.9	38.2
PATMI	22.1	29.1	42.1	48.3	43.7	40.7
Net Margin (%)	8.3	8.7	10.4	10.9	10.8	12.7
New Orders	362.8	458.8	435.1	425.9	524.4	369.1
ROE (%)	25.3	29.8	30.9	44.6	32.0	45.0
Op Cash Generation	6.4	16.8	41.2	19.6	48.5	42.9
EPS (cents)	6.76	5.83	8.33	9.65	9.17	8.20

CSE *global*

Operating Capital Efficiency

S\$M

	<u>1999</u>	<u>2000</u>	<u>2001</u>	<u>2002</u>	<u>2003</u>	<u>2004</u>	<u>2005</u>	<u>2006</u>	<u>2007</u>	<u>2008</u>	<u>2009</u>	<u>9M2010</u>	<u>Total</u>
Revenue	55.9	105.6	113.9	143.2	169.0	198.5	267.3	334.5	404.7	441.5	405.1	320.1	2959.3
PAT	7.8	13.7	4.1	12.1	14.2	17.4	22.1	29.1	42.1	48.3	43.7	40.7	295.3
New Capital	14.3	27.1	0.4	18.2	1.6	3.0	3.6	2.6	1.4	(26.5)	--	37.9	83.6
Divestment of non-core business / assets	--	2.8	1.0	--	4.4	1.1	2.4	7.6	--	--	--	--	19.3
CapEx	1.3	7.3	7.5	1.4	1.5	3.6	4.3	3.5	3.3	2.9	3.1	3.3	43.1
Acquisition	0.3	79.8	3.8	19.6	7.5	19.5	10.3	30.7	3.9	8.9	0.0	18.2	202.5
Dividend	--	--	--	--	2.4	5.1	6.5	8.3	11.8	22.8	14.3	17.9	89.1

102.9

334.7

* Net borrowing @ 9M2010 = S\$13.8M
 Net gearing @ 9M2010 = 7.4%
 Cash Generation (334.7-102.9-13.8) = S\$218.0M

CSE global

Business Outlook

- ❑ The oil & gas sector remains robust with oil price around US\$90 per barrel; steady growth in Gulf of Mexico, North Sea and Asean, and buoyant activities in Middle East and Australia will benefit our Automation and Telecom businesses
- ❑ The procurement for the remaining Community Trusts in the Southern Cluster via the Additional Supply Capability and Capacity (ACCS) catalogue backed by funding from the existing National program for IT funds is on-going. As the National Programme comes to an end we are actively pursuing Mental Health and Community Trusts in the Northern Clusters. In addition we are seeking Acute opportunities with Oceano and PICS
- ❑ The increase in commodity prices will benefit the mining projects in Australia
- ❑ The high demand of activated carbon will benefit the group environmental furnace business



Business Outlook

- ❑ Strong outstanding orders, coupled with the steady flow of brown field business and the Acquisition of ASTIB will enable the Group to deliver a good performance in 2011
- ❑ Good operating cash generation and strengthening of the Group balance sheet will enable the Group to be in a good position to look out for potential acquisitions as part of our growth strategy.

Going Forward

- ❑ Continue to expand globally through a combination of organic growth and acquisitions
- ❑ Acquire companies with specialised skills and technologies that are complimentary to our business model
- ❑ Focus on Middle East/Australia for Automation and Telecoms
- ❑ Focus on developing Healthcare outside for the UK



ASTIB Acquisition

- ❑ To be completed on 12 January 2011
- ❑ Telecoms Systems Integrator, Perth Australia
- ❑ Allows the Group to have 150 people in Australia (up from approx 60 staff)
- ❑ Allows the Group to double its annual revenue in Australia
- ❑ Purchase price of S\$47M to S\$65M dependent upon performance in 2011 and 2012
- ❑ Giving a Price to Earnings Ratio 5.0x to 7.3x